

DISUK

iCard *Enterprise*

User and Installation Guide

Version 1c

September 2013

DISUK Limited
25 Olympia Close
Northampton, NN4 0RU
United Kingdom

Phone: +44 1604 765826
Email: info@disuk.com
Web: www.disuk.com

Table of Contents

1	INTRODUCTION.....	1-1
2	INSTALLATION.....	2-1
3	OVERVIEW.....	3-1
3.1	KEY SETS.....	3-1
3.1.1	<i>To create a new key set.....</i>	<i>3-2</i>
3.1.2	<i>To use an existing Key Set.....</i>	<i>3-2</i>
3.1.3	<i>Recovery Cards.....</i>	<i>3-2</i>
3.2	CARDS.....	3-3
3.2.1	<i>New Card Production.....</i>	<i>3-3</i>
3.2.2	<i>Operator Types and Permissions.....</i>	<i>3-4</i>
3.3	AUDIT LOG.....	3-5

1 Introduction

iCard Enterprise is key management software enabling the configuration of smart cards for use in conjunction with iSecure to configure tape encryption appliances designed around Paranoia tape encryption appliance technology.

2 Installation

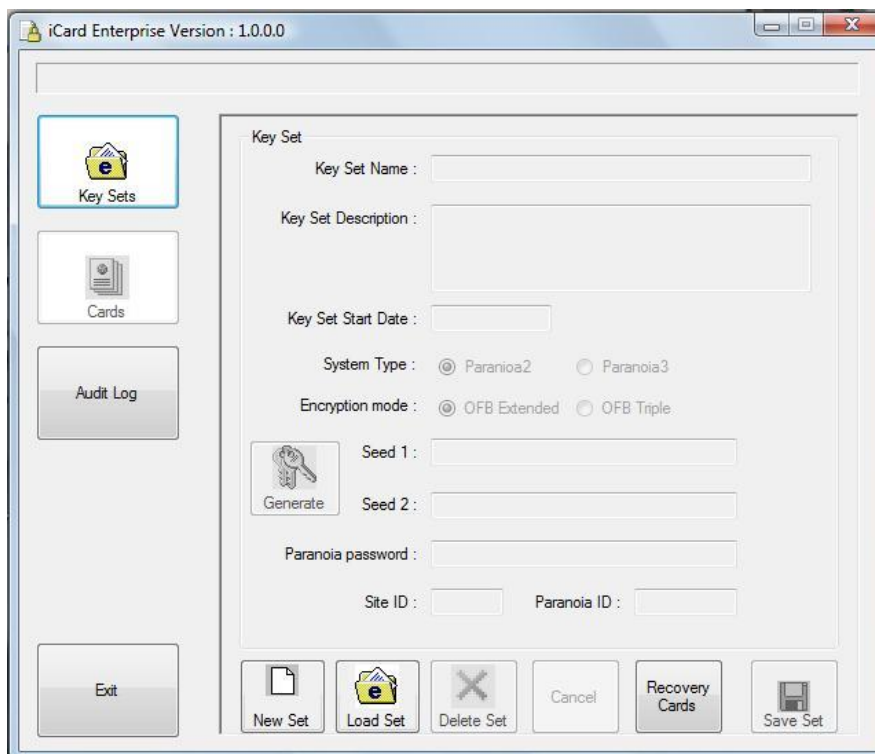
Insert the installation CD. If the installation program does not run automatically click 'Start', 'Run' and type <drive>:\Setup.Exe (where <drive> is the letter of your CD/DVD drive).

3 Overview

The iCard smartcard system allows creation of smartcards for use when configuring Paranoia based tape encryption products. iCard consists of two main sections - key management and card management. The key management section manages the passwords and key sets produced for configuring the encryption keys on the tape encryption appliances and producing disaster recovery cards. Card management is used to create and manage new and issued smartcards; users and user privileges.

3.1 Key Sets

The Key Sets page allows the creation of new keys, loading existing keys, deletion of keys and the creation of recovery card sets from keys.



3.1.1 To create a new key set

1. Click the New Set button
2. Type a name for the new key set
3. Type a description for the new key set
4. Set a start date for the new key set
5. Select the encryption mode – OFB Extended is the recommended mode to balance speed and security when using Paranoia2 and OFB 256 when using the Paranoia3
6. Either use the Generate button to create random seeds for the encryption key and a random password or you may type in your own seeds and password.
 - a. Set the site and Paranoia IDs as appropriate.
 - These options are used to segregate responsibility for different tape encryption devices. Depending on the level of security required, each site can have a different ID, so that specific cards / keys are used per site, and/or different tape encryption appliances can have a different ID so that a different card is required for each device. These options can also be used to restrict specific access e.g. an administrator on one site may only be granted backup operator privileges to another site. If this feature is not being used then leave the site ID at 000 and the Paranoia ID at 00000.
7. Click the Save Set button to save the new key set

3.1.2 To use an existing Key Set

1. Click the Load Set button
2. A list of existing Key Sets will be displayed
3. Select the required Key Set
4. Click the OK button

3.1.2.1 To Retire or Delete an existing Key Set

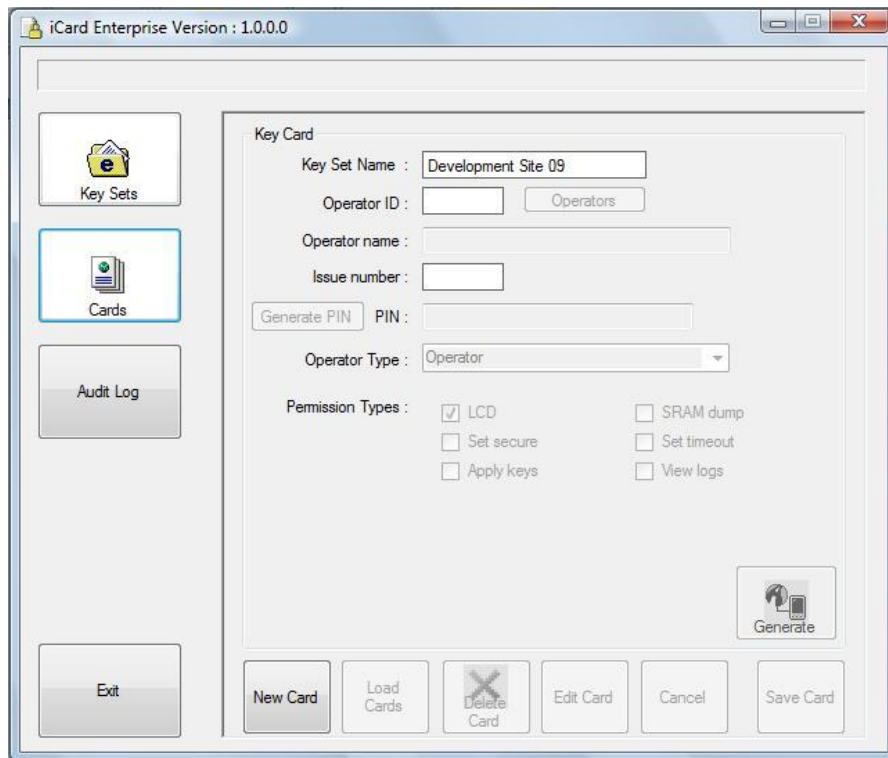
1. Load the required Key Set (as described above)
2. Click the Delete Set button
3. Retire or delete the Key Set by clicking the appropriate button

3.1.3 Recovery Cards

Recovery cards are created from Key Sets to enable Key Set recovery in the event of loss of the Smart Card generation PC through a general disaster, and therefore a disaster recovery situation, or data loss on the PC where the encrypted iCard database is lost. Recovery Card sets consists of three cards. To recreate the Key Set two cards out of the three card set are required.

3.2 Cards

The Cards page allows smart card production and operator management.



3.2.1 New Card Production

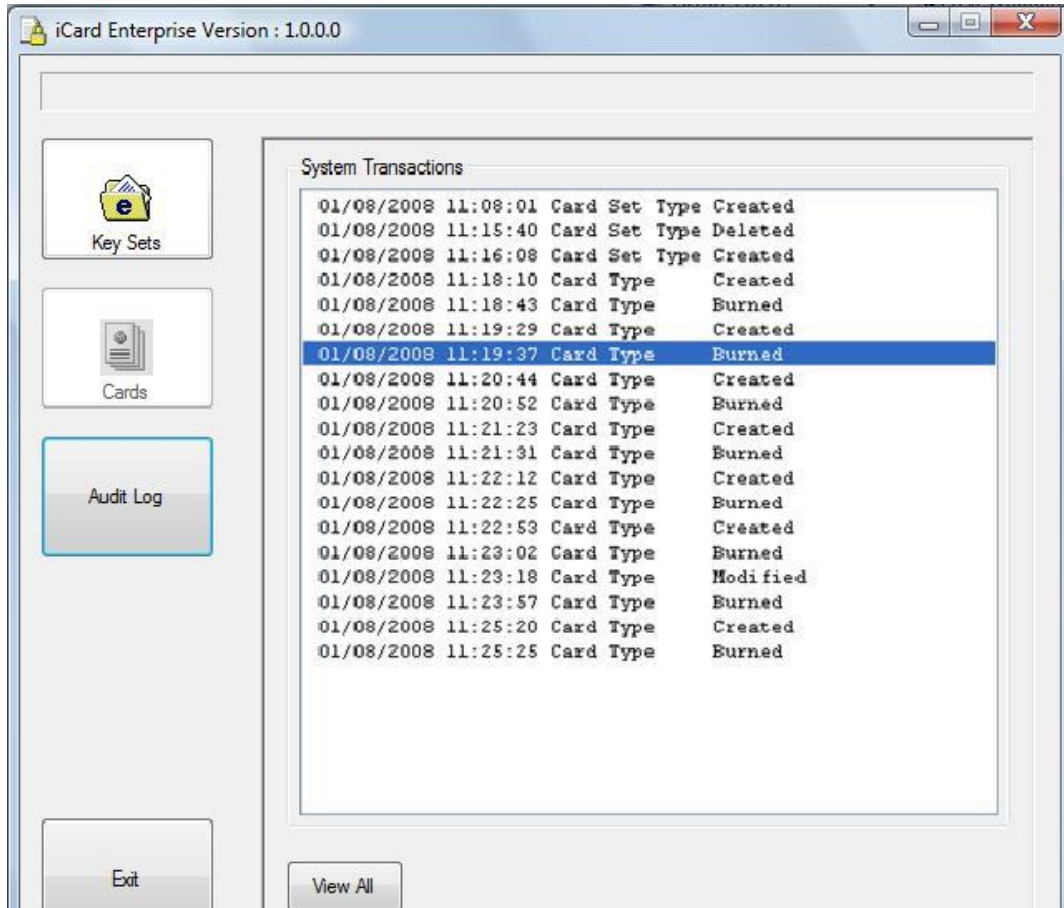
1. On the Key Sets page either create a new key set or Load an existing key set.
2. On the Cards page the current key set name will be displayed at the top of the page.
3. Click New Card to create a new smart card
4. Click Operators to load an existing, or create a new operator
5. The card pin can be entered manually or a random pin generated and can be up to 12 alphanumeric characters in length
6. Select the appropriate operator permissions from the Operator Type drop down list
7. Click Save Card
8. Ensure a smartcard reader is attached to the system and a smartcard is in the reader then click Generate to write data to the smartcard
9. If required, operators can be created and saved without generating any smartcards. The operators can be loaded and smart cards generated at a later date.

3.2.2 Operator Types and Permissions

1. **Operator:**
 - Access to monitor the front panel LCD
2. **Backup operator:**
 - Access to monitor the front panel LCD
 - May toggle secure encrypted mode on and off
3. **Security Officer:**
 - Apply the password and keys
 - Optional:
 - Set the timeout before the unit resets to factory defaults on power off (default five minutes)
 - View security logs
4. **Full Administrator:**
 - Access to monitor the front panel LCD
 - May toggle secure encrypted mode on and off
 - Optional:
 - Apply the password and keys
 - Extract a system memory dump for troubleshooting and analysis
 - Set the timeout before the unit resets to factory defaults on power off (default five minutes)
 - View security logs
5. **Auditor:**
 - View security logs
6. **Engineer:**
 - Access to monitor the front panel LCD
 - Extract a system memory dump for troubleshooting and analysis
 - Set the timeout before the unit resets to factory defaults on power off (default five minutes)
 - Update the system firmware

3.3 Audit Log

The Audit Log page allows you to view all system transactions for key sets and cards that have been created. To view the transactions click View All. The results will be similar to that shown below.



We would appreciate your comments and suggestions regarding this manual.
Please list any errors or suggestions for improvement.

Please complete and send this form to the address below. We will use your comments in planning future editions.

DISUK Limited
Technical Publications
25 Olympia Close
Northampton, NN4 0RU, UK

Phone: 44 (0)1604 765826

Category	Excellent	Good	Fair	Poor
General appearance				
Easy to understand				
Complete				
Illustrations				
Technical level				
Organization				
Acronyms & abbreviations				
Accuracy				
Index				

Organization:	
Name:	
Fax:	
Manual Code	
Manual Name	

